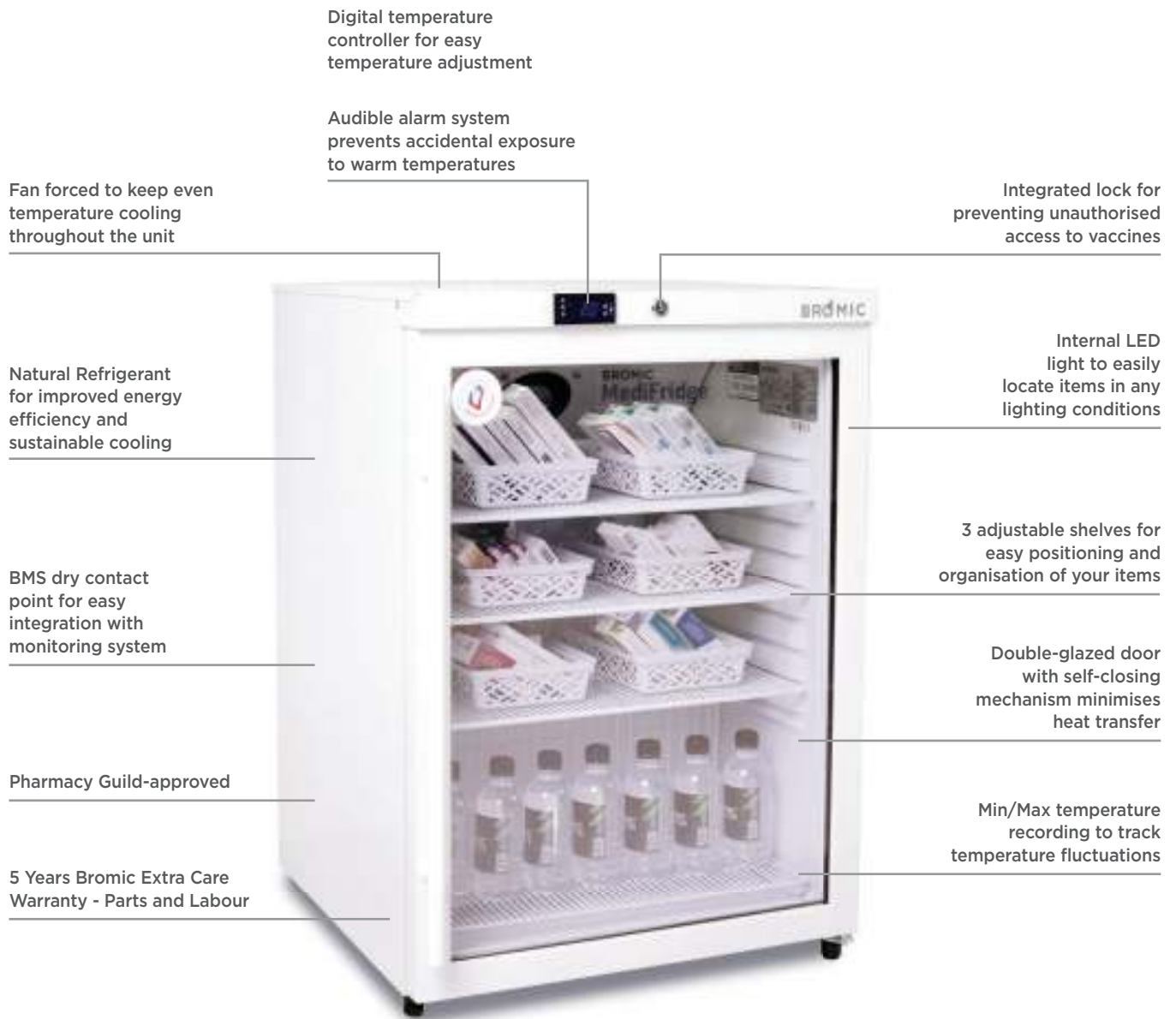


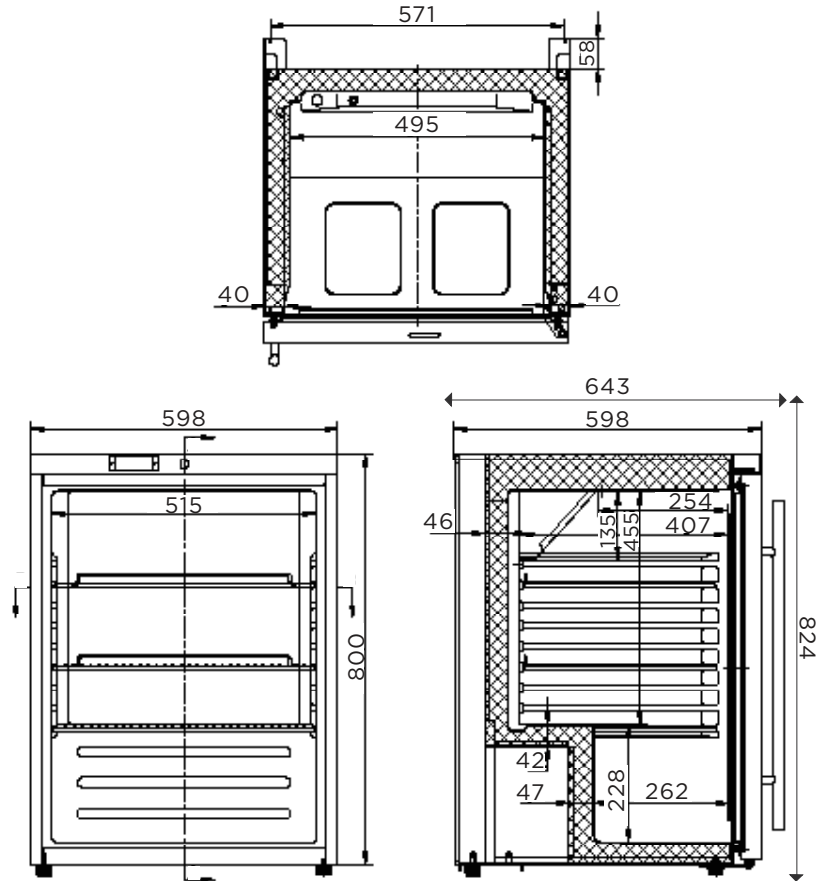
MediFridge Vaccine Fridge 145L

Medical Refrigeration



MediFridge Vaccine Fridge 145L

Medical Refrigeration



SPECIFICATIONS

DIMENSIONS

Model Number	MED0140GD-NR	No. of Doors	1	External (mm)
Part Number	3736257	Door Type	Glass	Width 595
Volume	145L	Door Glass Type	Double glazed Low-E Glass + Argon Gas	Depth 643
Unit Weight	40kg	Door Shape	Flat	Height 824
Packaged Weight	45kg	Door Style	Hinged	
Temperature Range	+2°C to 8°C	Door Lock	Yes	
Max Ambient Temperature	32°C	Self-Closing Door	Yes	Internal (mm)
Climate Class	4M2	Door Swing Dimensions	590mm	Width 491
Energy Consumption	1.396kWh/24h	Total Depth of Door Open	1190mm	Depth 510
Refrigeration Capacity	100W	No. of Shelves Incl. Base	4	Height 687
Air-Circulation	Fan-Forced	Shelf Type	Adjustable	
Refrigerant	R600a	Shelf Dimensions	500(w) x 355(d) mm	
Rated Current	1.2A	Defrost System	Automatic	Packaged (mm)
Electrical Voltage	220-240V	Temp. Controller	Digital	Width 650
Frequency	50Hz	Castors	No, feet + rollers	Depth 650
Power Supply	Single Phase	Min/Max Temp Recorder	Yes	Height 885
Power Plug	1 x 10A	Temp Alarm	Yes	
Plug Location	Rear, bottom right	Door Alarm	Yes	
Colour	White	Audible & Visual Alarm	Yes	
Internal Light	LED	Warranty	5 Years Bromic Extra Care Warranty - Parts and Labour	